

REVISIONS

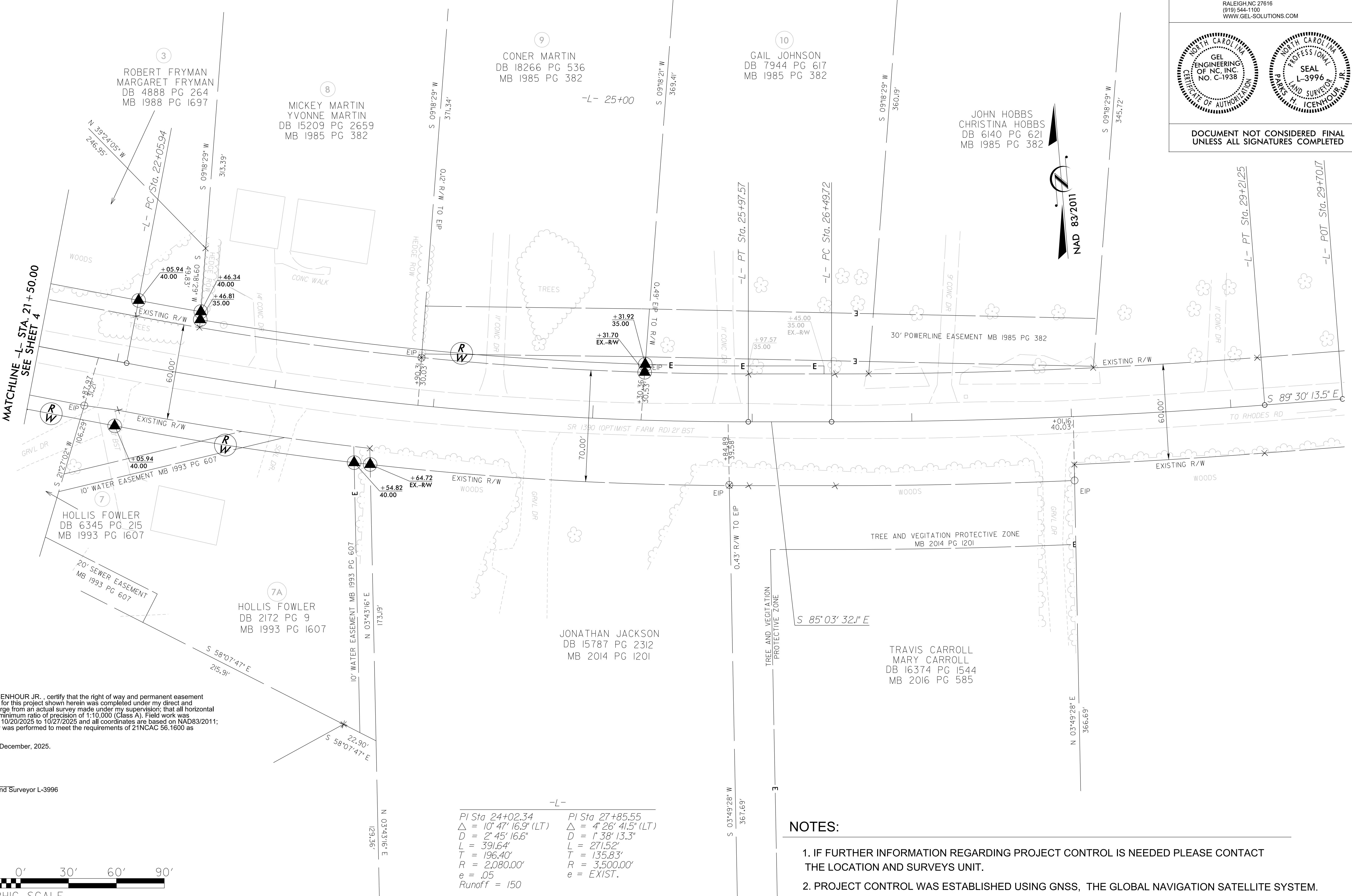


Professional Land Surveyor L-3996

I, PARKS H. ICENHOUR JR., certify that the right of way and permanent easement monumentation for this project shown herein was completed under my direct and responsible charge from an actual survey made under my supervision; that all horizontal closures had a minimum ratio of precision of 1:10,000 (Class A). Field work was performed from 10/20/2025 to 10/27/2025 and all coordinates are based on NAD83/2011; That this survey was performed to meet the requirements of 21NCAC 58.1600 as applicable.

This 3rd day of December, 2025.

MATCHLINE -L- STA. 21+50.00  
SEE SHEET 4



-L-  
PI Sta 24+02.34  
 $\Delta = 10' 47' 16.9''$  (LT)  
 $D = 2' 45' 16.6''$   
 $L = 391.64'$   
 $T = 196.40'$   
 $R = 2,080.00'$   
 $e = .05$   
Runoff = 150

PI Sta 27+85.55  
 $\Delta = 4' 26' 41.5''$  (LT)  
 $D = 1' 38' 13.3''$   
 $L = 271.52'$   
 $T = 135.83'$   
 $R = 3,500.00'$   
 $e = EXIST.$

NOTES:

1. IF FURTHER INFORMATION REGARDING PROJECT CONTROL IS NEEDED PLEASE CONTACT THE LOCATION AND SURVEYS UNIT.
2. PROJECT CONTROL WAS ESTABLISHED USING GNSS, THE GLOBAL NAVIGATION SATELLITE SYSTEM.
3. RIGHT OF WAY MONUMENTATION ESTABLISHED 10/20/2025 TO 10/27/2025.

PROJECT REFERENCE NO.	SHEET NO.
HL-0008Q	RW05
Location and Surveys	
<b>GEL SOLUTIONS</b> an Affiliate of THE GEL GROUP, INC. 2700 SUMNER BLVD. SUITE 106 RALEIGH, NC 27616 (919) 544-1100 WWW.GEL-SOLUTIONS.COM	
DOCUMENT NOT CONSIDERED FINAL UNLESS ALL SIGNATURES COMPLETED	